



## The standard of quality !

The Glace-Guard™ Mark door is unmatched for its insulation performance and robustness. The door, available in 3" or 4" thickness, is made of high quality galvanized steel skins and insulated with polyurethane foam. Its hardware is engineered to ensure an intensive usage with smoothness of operation.

The Glace-Guard™ Mark door can be operated manually or can be motorized and equipped with a variety of safety devices and actuation accessories.

The Glace-Guard™ Mark door is your best door investment when energy conservation and low maintenance costs are criteria of selection.

The Glace-Guard™ Mark door is ideal for applications such as:

- Cold storage distribution warehouses
- Grocery distribution warehouses
- Food processing plants
- Pharmaceutical warehouses
- Heavy manufacturing industries



Overhead cold storage door with heat trace  
Model Glace-Guard™ Mark IV (4" thick)

### Mark® / Glace-Guard™

Mark III, Mark IV Series

Section 08326

#### Well insulated:

3" (75mm) or 4" (100mm) door thickness with an insulated polyurethane foam core.

#### Designed for energy savings:

A deep tongue-and-groove joint with a double integral bubble weather seal ensures a superior air tightness. An authentic thermal break eliminates heat loss by preventing conductivity between external and internal skins. Triple-lip perimeter weather seal retained in a heavy duty aluminum retainer. Industrial aluminum bottom retainer with double U-shaped bottom weather seal.

#### Built to last with superior quality materials:

Proven experience and expertise achieve a perfect adherence of the polyurethane foam to the metal skins, ensuring panels strength and rigidity, and preservation of insulation value over time. The high quality 26 gauge galvanized steel with superior 25 microns polyester top coat, ensures durability and resistance to corrosion.

#### Heavy duty hardware for long lasting use:

3" galvanized track system with torsion spring counterbalancing system, weight balancing system available in option.

#### Heavy duty motor with safety devices and electric accessories (optional):

Industrial motor with safety and actuation accessories such as pneumatic safety edge, photo cell, pull cord, motion detector and magnetic loop detector.

#### Heat trace (optional):

For freezer applications, the door panels are equipped with heat trace to prevent ice or frost accumulation and to avoid the need of a heated threshold.



Technical specifications

Section 08326

**Reference product:**

Glace-Guard™ Mark III (3"),  
Glace-Guard™ Mark IV (4"),  
as manufactured by Thermostop Inc.,  
www.thermostop.com

**Temperature range:**

-20°F to +120°F (-29°C to +49°C)

**Size:**

Up to 28' 0" W. x 28' 0" H.  
(8534mm W. x 8534mm H.)

**Thickness:**

- 3" (75mm) thick:  
Glace-Guard™ Mark III
- 4" (100mm) thick:  
Glace-Guard™ Mark IV

**Panels:**

3" (75mm) or 4" (100mm) thick panels, insulated with rigid polyurethane, foamed in place under high pressure between two metal skins. Standard 26ga. steel skins, white stucco finish. For other skins options, please consult *Metal skins options* presented further.

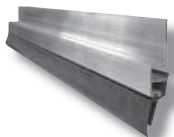
**Joint and seal:**

High quality metal skins roll formed into an exclusive tongue-and-groove joint with a true thermal break and a double bubble-shaped weather seal.



**Perimeter weather seal:**

Triple-lip, flexible PVC weather seal, retained in an extra robust extruded aluminum retainer.



**Bottom weather seal:**

U-shaped, flexible double PVC weather seal, retained in a heavy duty extruded aluminum retainer, securely fastened to the bottom of the door.



**Hardware:**

- Model 80-T: 3" track system with torsion spring counterbalancing system
- Model 80-W (optional): 3" track system with weight counterbalancing system

For more information, please consult the *Hardware - Thermostop Industrial Doors* brochure.

**Back frame (optional):**

Vertical and horizontal back frame made of ¾" water-resistant plywood in double layer, clad with white galvanized steel.

**Heat trace (optional):**

For freezer applications, the door panels are equipped with a heat trace to prevent ice or frost accumulation and to avoid the need of a heated threshold.

**Glazing (optional):**

Sealed glass or acrylic 24" x 12" (610mm x 305mm) windows



**Motor (optional):**

XTRA-LH or XTRA-H motor. Jackshaft type. Belt drive. ½ to 1 hp. 115, 230, 460 or 575V.

- Optional safety devices: pneumatic safety edge, photo cell.
- Optional actuation devices: pull cord, radio control, magnetic loop detector, motion detector.

For more information please consult the *Operators - Thermostop Industrial Doors* brochure.



**Metal skins options:**

Steel	Finish
26ga. (0.41mm)	stucco, white
20ga. (0.86mm)	smooth, white
16ga. (1.42mm)	smooth, painted

Aluminum	Finish
24ga. (0.60mm)	stucco, white or grey RAL-9006
16ga. (1.30mm)	smooth, clear anodized



Grocery distribution warehouse using Glace-Guard™ Mark III

Tradition of quality

3775 Losch Blvd.  
Longueuil (Quebec)  
Canada  
J3Y 5T7

**Phone: 450.678.8666**  
Toll free: 866.678.0123  
Fax: 450.678.7765  
**thermostop.com**

**Warranty**

Thermostop doors and hardware carry a warranty of one (1) year against any defects or faulty workmanship. The door panels carry a ten (10) year limited warranty against perforation due to rusting, and a five (5) year limited warranty on delamination, under normal operational conditions.