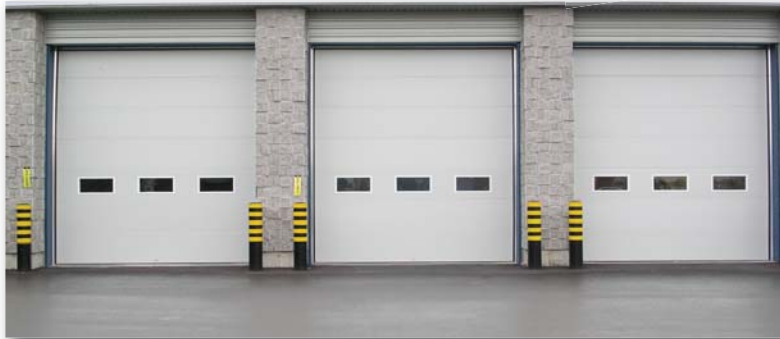




The most secure door in the industry!

The Thermostop™ Sentinel doors are your high security sectional doors which offer both a strong deterrent to intrusion and the highest insulation performance. Since 1984, architects, building design consultants and end users have recognized the extraordinary dual quality of the Thermostop™ Sentinel doors and have used them for applications such as:

- Detention centers
- Diamond and gold mines
- Government buildings
- Military installations
- Pharmaceutical plants and warehouses
- Police stations
- Research laboratories



Hydro-Québec Building Model Mark II-166 (2" thick - 16ga. steel)

Sentinel® / Thermostop™

Mark II, Mark III, Mark IV Series

Section 08362

Insurmountable shield against intrusion:

High quality 20 gauge or 16 gauge steel for both exterior and interior skins.

Best insulation performance:

2" (50mm), 3" (75mm) or 4" (100mm) door thickness with an insulated polyurethane foam core.

Designed for energy savings:

A deep tongue-and-groove joint with an integral bubble weather seal ensures a superior air tightness. An authentic thermal break eliminates heat loss by preventing conductivity between external and internal skins.

Built to last:

Proven experience and expertise achieve a perfect adherence of polyurethane foam to metal skins, ensuring panels strength, rigidity and preservation of the insulation value over time.

Superior quality materials:

The high quality of the pre-painted galvanized steel ensures durability and resistance to corrosion. Triple-lip perimeter weather seal retained in a heavy duty aluminum retainer. Industrial aluminum bottom retainer with U-shaped bottom weather seal.



Tradition of quality



Government of Canada Building Model Mark IV-200 (4" thick - 20ga. steel)

Technical specifications

Section 08362

Wind load design criteria:

Doors to withstand a wind load of 21psf (velocity of 90.5 miles/hour) with a maximum horizontal deflection of 1/120 of opening width.

Performance tests:

■ **ASTM E-283**

(Air Leakage):

Less than 0.130 cfm/ft² at 25 miles/hour

■ **ASTM E-547**

(Water Penetration):

Absolutely no leak

Reference product:

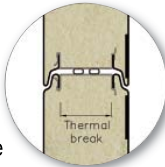
Thermostop™ Sentinel doors, model Mark II-200, Mark III-200, Mark IV-200, Mark II-166, Mark III-166 or Mark IV-166, as manufactured by Thermostop Inc., www.thermostop.com

Manufacturing process:

The inner core consists of rigid polyurethane, foamed in place under high pressure between two metal skins.

Joint and seal:

High quality galvanized steel skins roll formed into an exclusive tongue-and-groove joint with a true thermal break and a double bubble-shaped weather seal (single seal for the Mark II models).



Metal skins and thickness:

Options available:

- 20ga. steel: Thermostop™ Sentinel, model Mark II-200 (2"), Mark III-200 (3") or Mark IV-200 (4")
- 16ga. steel: Thermostop™ Sentinel, model Mark II-166 (2"), Mark III-166 (3") or Mark IV-166 (4")

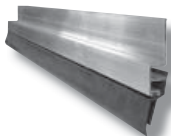
Finish:

- 20ga. steel: White. Optional shop painted color. Smooth finish, with ribs.
- 16ga. steel: Skins to be shop painted. Color to be selected from the RAL color chart. Smooth finish.



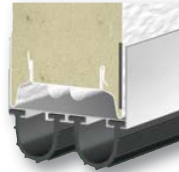
Perimeter weather seal:

3-lip, flexible PVC weather seal, retained in an extra robust extruded aluminum retainer.



Bottom weather seal:

U-shaped, flexible PVC double weather seal, retained in a heavy duty extruded aluminum retainer (one bottom seal for the Mark II models).



End caps:

Sections are equipped with 16ga. (1.42mm) thick galvanized steel end caps.



Glazing:



Type A (for the Mark II models only):

Full view extruded aluminum panel. Standard anodized finish.



Type B

Type C

Type E

Standard 24" x 12".

Hardware and electric operators:

Recommended models (for 10 000 cycles springs):

- Up to 12'0" (W.) x 12'0" (H.): Hardware model 80-T with electric motor XTRA-H
- Up to 16'0" (W.) x 16'0" (H.): Hardware model 80-THD with electric motor XTRA-HHD

More than 16'0" (W.) x 16'0" (H.): Consult with Thermostop Inc.

Note: For more information, please consult the **Hardware - Thermostop Industrial Doors and Operators - Thermostop Industrial Doors brochures.**

Metal skins: 2 options available

20ga. Steel



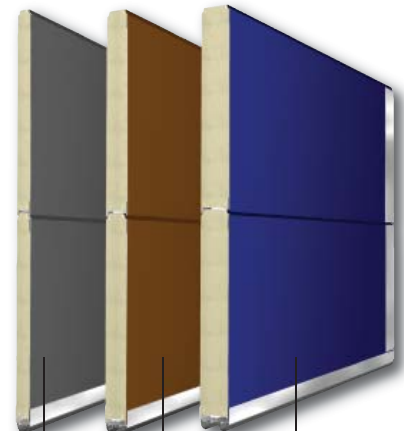
Mark II-200
2" (50mm)

Mark III-200
3" (75mm)

Mark IV-200
4" (100mm)

- White, smooth finish, with ribs
- Optional shop painted color

16ga. Steel



Mark II-166
2" (50mm)

Mark III-166
3" (75mm)

Mark IV-166
4" (100mm)

- Smooth finish
- Shop painted color

THERMOSTOP

Tradition of quality

3775 Losch Blvd.
Longueuil (Quebec)
Canada
J3Y 5T7

Phone: 450.678.8666

Toll free: 866.678.0123

Fax: 450.678.7765

thermostop.com

Warranty

Thermostop doors and hardware carry a warranty of one (1) year against any defects or faulty workmanship. The door panels carry a ten (10) year limited warranty against perforation due to rusting, and a five (5) year limited warranty on delamination, under normal operational conditions.

THERMOSTOP