

Tradition®

THERMOSTOP
Industrial Doors



Tradition of quality at your service!

The Thermostop™ Tradition is your best value industrial door. This high performance door has been chosen, since 1984, by architects, building design consultants and end users for its reliability, durability and economical acquisition cost. The Thermostop™ Tradition is the ideal door for applications such as:

- Car dealerships
- Dock door for cold storage warehouses
- Farms and stables
- Fire stations
- General warehouses
- Indoor parkings
- Military installations
- Saline environments (Mark II-244A model)



Logistics Warehouse
Model Mark II-266 (2" thick - 26ga. steel)

Tradition® / Thermostop™

Mark II Series

Section 08362

Best insulation performance:

2" (50mm) door thickness with an insulated polyurethane foam core.

Designed for energy savings:

A deep tongue-and-groove joint with an integral bubble weather seal ensures a superior air-tightness. An authentic thermal break eliminates heat loss by preventing conductivity between external and internal skins.

Designed to be installer friendly:

A continuous reinforcement plate, on the full width of the door panel, allows complete flexibility for the attachment of the intermediate hinges.

Built to last:

Proven experience and expertise achieve a perfect adherence of the polyurethane foam to the metal skins, ensuring panel strength, rigidity and preservation of insulation value over time. The use of steel end caps, versus the wood inserts, gives better support for hardware attachment and avoids potential moldiness due to the use of wood.

Superior quality materials:

The high quality galvanized steel or aluminum skins with superior 25 microns polyester top coat, ensure durability and resistance to corrosion. Triple-lip perimeter weather seal and strong U-shaped bottom seal, ensure complete air-tightness.

THERMOSTOP

Tradition of quality



International Formula 1 Racing Circuit
Model Mark II-244A (2" thick - 24ga. aluminum)

Wind load design criteria:

Doors to withstand a wind load of 21psf (velocity of 90.5 miles/hour) with a maximum horizontal deflection of 1/120 of opening width.

Performance tests:

- **ASTM E-283**
 (Air Leakage): Less than 0.130 cfm/ft² at 25 miles/hour
- **ASTM E-547**
 (Water Penetration): Absolutely no leak

Reference product:

Thermostop™ Tradition, model Mark II-266 (steel) or Mark II-244A (aluminum), as manufactured by Thermostop Inc., www.thermostop.com

Manufacturing process:

The inner core consists of rigid polyurethane, foamed in place under high pressure between two metal skins.

Joint and seal:

High quality galvanized steel or aluminum skins roll formed into an exclusive tongue-and-groove joint with a true thermal break and a bubble-shaped weather seal.



Metal skins:

2 options available:

- 26ga. steel: Thermostop™ Tradition, model Mark II-266
- 24ga. aluminum: Thermostop™ Tradition, model Mark II-244A

Thickness:

2" (50mm) thick.

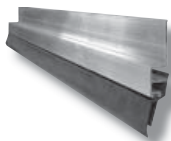
Finish:

White (for steel and aluminum) or grey RAL-9006 (for aluminum only), stucco finish. Optional shop painted color from the SICO or RAL color chart.



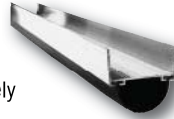
Perimeter weather seal:

3-lip, flexible PVC weather seal, retained in an extra robust extruded aluminum retainer.



Bottom weather seal:

U-shaped, flexible PVC weather seal, retained in a heavy duty extruded aluminum retainer, securely fastened to the bottom of the door.



End caps:

Sections are equipped with 16ga. (1.42mm) thick galvanized steel end caps.



Glazing:

Type A:

Full view extruded aluminum panel. Clear anodized finish.



Type B:

Black square frame. Double acrylic or 1/8" - 1/8" sealed glass. Standard 24" x 12".



Type C:

Black round corner frame. Double acrylic glass. Standard 24" x 12".



Type E:

White square frame windows. Standard 24" x 12".



Pedestrian door (optional):

Standard 34" (W.) x 78" (H.)



Hardware and electric operators:

Recommended models (for 10 000 cycles springs):

- Up to 12'0" (W.) x 12'0" (H.): Hardware model 50-T with electric motor XTRA-LH or XTRA-LT
- Up to 16'0" (W.) x 16'0" (H.): Hardware model 80-T with electric motor XTRA-H

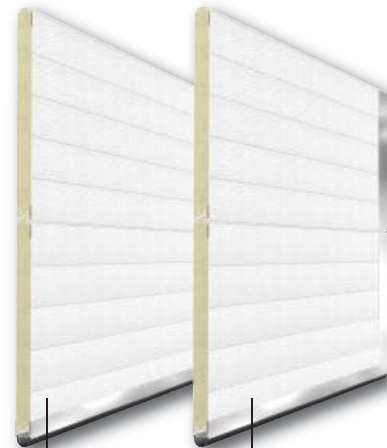
More than 16'0" (W.) x 16'0" (H.): Consult with Thermostop Inc.

Note: For more information, please consult the Hardware - Thermostop Industrial Doors and the Operators - Thermostop Industrial Doors brochures.

Metal skins: 2 options available

26ga. Steel

24ga. Aluminum



Mark II-266
2" (50mm)

Mark II-244A
2" (50mm)

- White (Mark II-266 and Mark II-244A) or grey RAL-9006 (Mark II-244A only)
- Optional shop painted color

THERMOSTOP

Tradition of quality

3775 Losch Blvd.
 Longueuil (Quebec)
 Canada
 J3Y 5T7

Phone: 450.678.8666
Toll free: 866.678.0123
Fax: 450.678.7765
thermostop.com

Warranty

Thermostop doors and hardware carry a warranty of one (1) year against any defects or faulty workmanship. The door panels carry a ten (10) year limited warranty against perforation due to rusting, and a five (5) year limited warranty on delamination, under normal operational conditions.

THERMOSTOP