



The best insulated industrial door!



The Thermostop™ Energex is simply the best insulated industrial door. With a 3" or 4" thick CFC-free polyurethane foam core, the Energex door is by far the best insulated door of the industry. Extremely airtight and robust, the Energex door is ideal for applications such as government building, LEED building, municipal warehouse, hospital, arctic airport and government building, arctic arena and school, etc.

Best insulation performance:

3" or 4" thick high density CFC-free polyurethane foam core.

Robust construction:

High quality galvanized steel or aluminium skins with 25 microns polyester top coat. Galvanized steel end caps.

Airtight design:

Deep tongue-and-groove joint with integral bubble seal. Authentic thermal break. Triple lip perimeter weather seal. Double bottom U rubber seal.

Heavy duty hardware and motor:

3" galvanized track system with torsion spring counterbalancing system. Industrial motors and accessories.

Wind load design criteria:

Doors to withstand a wind load of 21psf (velocity of 90.5 miles/hour) with a maximum horizontal deflection of 1/120 of opening width.

Performance tests:

- **ASTM E-283**
 (Air Leakage): Less than 0.130 cfm/ft² at 25 miles/hour
- **ASTM E-547**
 (Water Penetration): Absolutely no leak

Reference product:

Thermostop™ Energex doors, model Mark III-266 (steel), Mark IV-266 (steel), Mark III-244 (aluminium), Mark IV-244 (aluminium), as manufactured by Thermostop Inc., www.thermostop.com

Manufacturing process:

The inner core consists of rigid polyurethane, foamed-in-place under high pressure between two metal skins.

Joint and seal:

High quality metal skins roll formed into an exclusive tongue-and-groove joint with a true thermal break and a double bubble-shaped weather seal.



Metal skins & thickness:

- **26ga. steel:**
 Energex Mark III-266 (3" thick)
 Energex Mark IV-266 (4" thick)
- **24ga. aluminium:**
 Energex Mark III-244 (3" thick)
 Energex Mark IV-244 (4" thick)

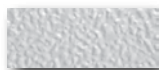
Finish:

stucco finish.

Standard



White



Grey RAL-9006 (24 ga. aluminium only)

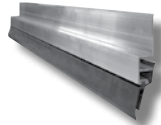
Optional



Painted color to be selected from the SICO or the RAL color chart.

Perimeter weather seal:

3-lip, flexible PVC weather seal, retained in an extra robust extruded aluminium retainer.



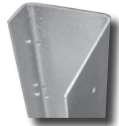
Bottom weather seal:

U-shaped, flexible PVC double weather seal, retained in a heavy-duty extruded aluminium retainer.



End caps:

Sections are equipped with 16ga. (1.42mm) thick galvanized steel end caps.



Glazing:

Type B:

Black square frame. Double acrylic or 1/8" - 1/8" sealed glass. Standard 24" x 12".



Type C:

Black round corner frame. Double acrylic glass. Standard 24" x 12".



Type E:

White square frame windows. 1/8" - 1/8" sealed glass. Standard 24" x 12".



Hardware and electric operators:

Recommended models (for 10 000 cycles springs):

- **Up to 16'0" (W.) x 16'0" (H.):**
 Hardware model 80-T with electric motor XTRA-H
- **More than 16'0" (W.) x 16'0" (H.):**
 Hardware model 80-THD with electric motor XTRA-HHD

Note: For more information, please consult Operators - Thermostop Industrial Doors brochures.



Metal skins options:

Steel	Finish
26ga. (0.41mm)	stucco, white
Aluminium	Finish
24ga. (0.60mm)	stucco, white or grey RAL-9006



Tradition of quality

3775 Losch Blvd.
 Longueuil (Quebec)
 Canada
 J3Y 5T7

Phone: 450.678.8666
 Toll free: 866.678.0123
 Fax: 450.678.7765
thermostop.com

Warranty

Thermostop doors and hardware carry a warranty of one (1) year against any defects or faulty workmanship. The door panels carry a ten (10) year limited warranty against perforation due to rusting, and a five (5) year limited warranty on delamination, under normal operational conditions.

