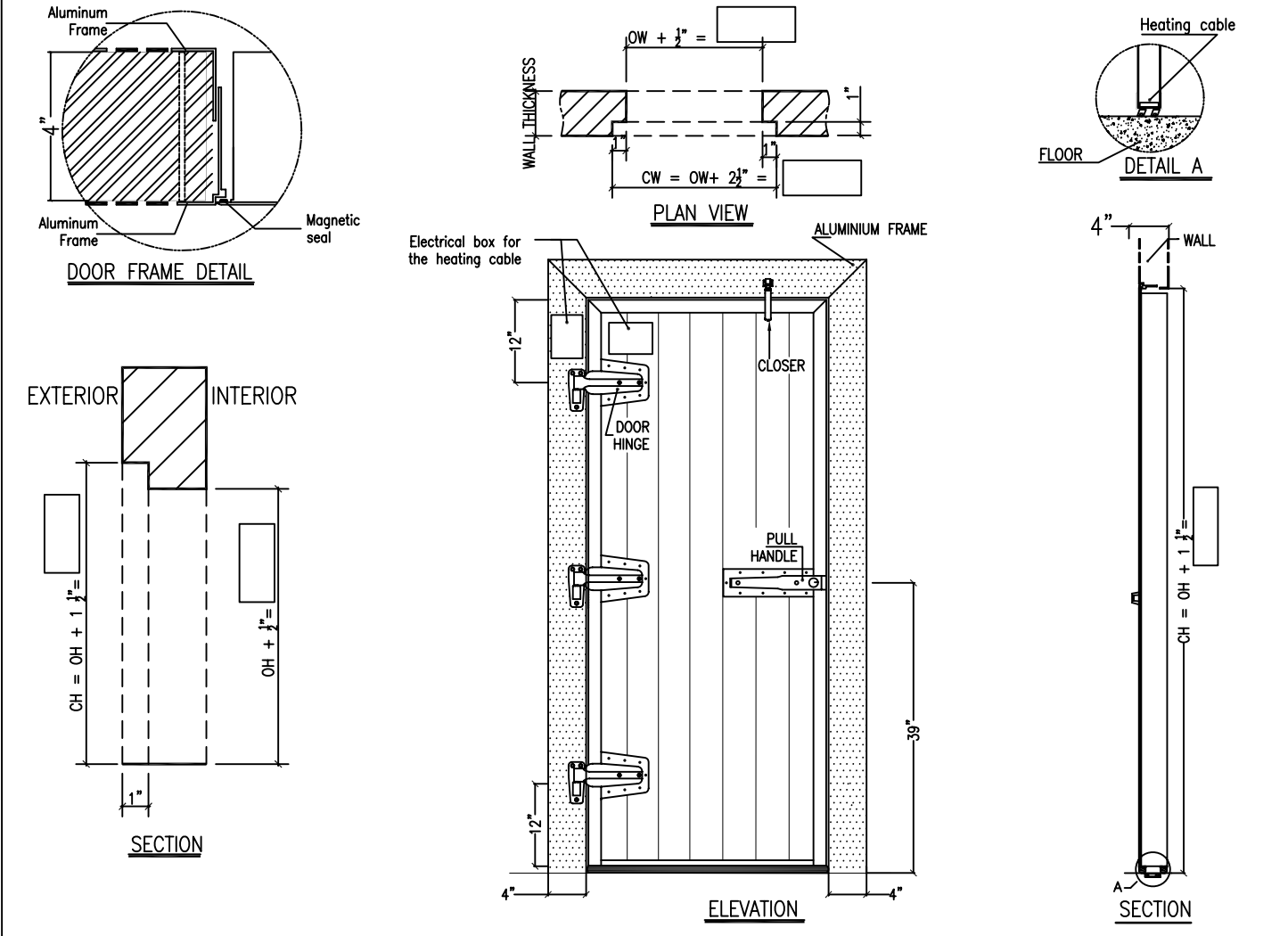


SHOP DRAWING - ENTRANCE DOOR GLACE-GUARD ET-400




- Specifications:**
- ☐ ET-400: 4" (100mm)
 - ☐ Cooler 2° C @ 5° C (35° F @ 40° F)
 - ☐ Freezer -29° C @ 0° C (-20° F @ 32° F)
 - ☐ Heating cable on four (4) sides
 - ☐ Left side hinges viewed from the outside

- Standard Features:**
- *Polyurethane insulated panels
 - *26ga steel, white stucco embossed finish
 - *Heavy-duty 5/32" (4mm) aluminium opening frame in two extruded angles
 - *Magnetic seals on door frame perimeter.
 - *Bottom double blade seal on door panel.
 - * 3 (three) 10" cam-lift hinges.
 - * 1 (one) pull handle.
 - * 1 (one) mechanical closer.

- Options:**
- ☐ Panic Bar
 - ☐ Window: triple thermo glass clear 12"x24"x 1/8"
 - ☐ Kick plate made of 1/8" aluminium checker plate x 24" high x one side

DIMENSIONS	QTY	FINISHED OPENING		REQUIRED CLEARANCE		APPROVED FOR MANUFACTURING BY:	
		WIDTH (OW)	HEIGHT (OH)	WIDTH (CW)	HEIGHT (CH)	Name:	Date:
						Signature:	



THERMOSTOP INC.
3775, boulevard Losch, Longueuil (Québec), Canada J3Y 5T7,
Tel.: (450) 678-8666, Fax: (450) 678-7765, www.thermostop.com

Distributor:	Date:	Drawn by:	Verify by:	Page:	Note : *Drawings not to scale
Customer:	Revision:		L.H.	1/1	

Legend

OW = OPENING WIDTH
OH = OPENING HEIGHT
CW = CLEARANCE WIDTH
CH = CLEARANCE HEIGHT