

Mark series



The standard of quality!

The Glance-Guard™ Mark door is unmatched for its insulation performance and robustness. The door, available in 3" or 4" thickness, is made of high quality galvanized steel skins and insulated with polyurethane foam. Its hardware is engineered to ensure an intensive usage with smoothness of operation.

The Glance-Guard™ Mark door can be operated manually or can be motorized and equipped with a variety of safety devices and actuation accessories.

The Glance-Guard™ Mark door is your best door investment when energy conservation and low maintenance costs are criteria of selection.

The Glance-Guard™ Mark door is ideal for applications such as:

- Cold storage distribution warehouses
- Grocery distribution warehouses
- Food processing plants
- Pharmaceutical warehouses
- Heavy manufacturing industries



Mark® / Glance-Guard™

Mark III, Mark IV Series

Section 08 34 13 Cold Storage Doors

Well insulated:

3" (R-24) or 4" (R-32) door thickness with an insulated polyurethane foam core.

Designed for energy savings:

A deep tongue-and-groove joint with a double integral bubble weather seal ensures a superior air tightness. An authentic thermal break eliminates heat loss by preventing conductivity between external and internal skins. Triple-lip perimeter weather seal retained in a heavy duty aluminum retainer. Industrial aluminum bottom retainer with double U-shaped bottom weather seal.

Built to last with superior quality materials:

Proven experience and expertise achieve a perfect adherence of the polyurethane foam to the metal skins, ensuring panels strength and rigidity, and preservation of insulation value over time. The high quality 26 gauge galvanized steel with superior 25 microns polyester top coat, ensures durability and resistance to corrosion.

Heavy duty hardware for long lasting use:

3" galvanized track system with torsion spring counterbalancing system, weight balancing system available in option.

Heavy duty motor with safety devices and electric accessories (optional):

Industrial motor with safety and actuation accessories such as pneumatic safety edge, photo cell, pull cord, motion detector and magnetic loop detector.

Heat trace (optional):

For freezer applications, the door panels are equipped with heat trace to prevent ice or frost accumulation and to avoid the need of a heated threshold.

THERMOSTOP
Tradition of quality



Overhead cold storage door with heat trace
Model Glance-Guard™ Mark IV (4" thick)

Technical specifications

Section 08 34 13 Cold Storage Doors

Reference product:

Glance-Guard™ Mark III (3"),
Glance-Guard™ Mark IV (4"),
as manufactured by Thermostop Inc.,
www.thermostop.com

Temperature range:

Cooler : 4°C & above / 38°F & above
Freezer : -30°C to 2°C / -22°F to 36°F

Size:

Up to 28' 0" W. x 28' 0" H.
(8534mm W. x 8534mm H.)

Thickness and insulation value:

- 3" (75mm) thick, R-24:
Glance-Guard™ Mark III
- 4" (100mm) thick, R-32:
Glance-Guard™ Mark IV

Panels:

3" (75mm) or 4" (100mm) thick panels,
insulated with rigid polyurethane, foamed in
place under high pressure between two metal
skins. Standard 26ga. steel skins, white
stucco finish. For other skins options, please
consult *Metal skins options* presented
further.

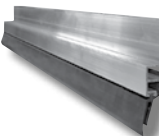
Joint and seal:

High quality metal skins
roll formed into an
exclusive tongue-and-
groove joint with a true
thermal break and a
double bubble-shaped
weather seal.



Perimeter weather seal:

Triple-lip, flexible PVC
weather seal, retained in
an extra robust extruded
aluminum retainer.



Bottom weather seal:

U-shaped, flexible
double PVC weather seal,
retained in a heavy duty
extruded aluminum re-
tainer, securely fastened
to the bottom of the door.



Hardware:

- Model 80-T: 3" track system with torsion
spring counterbalancing system
- Model 80-W (optional): 3" track system
with weight counterbalancing system

For more information, please consult the
Hardware - Thermostop Industrial Doors
brochure.

Face frame (optional):

1" thick extruded aluminum face frame to self
support the door and hardware. Optional heat
trace when door is installed in freezer room.

Heat trace (optional):

For freezer applications, the door panels are
equipped with a heat trace to prevent ice or
frost accumulation and to avoid the need of
a heated threshold.

Glazing (optional):

Sealed glass or acrylic
24" x 12" (610mm x 305mm)
windows



Motor (optional):

XTRA-H or XTRA-HHD motor. Jackshaft type.
Belt drive. ½ to 1 hp. 115, 230, 460 or 575V.

- Optional safety devices: pneumatic
safety edge, photo cell.
- Optional actuation devices: pull cord,
radio control, magnetic loop detector,
motion detector.

For more information please consult the
Operators - Thermostop Industrial Doors
brochure.



Glance-Guard™ Mark III
3" (75mm) thick

Glance-Guard™ Mark IV
4" (100mm) thick

Metal skins options:

Steel	Finish
26ga. (0.41mm)	stucco, white
20ga. (0.86mm)	smooth, white
16ga. (1.42mm)	smooth, painted

Aluminum	Finish
24ga. (0.60mm)	stucco, white or grey RAL-9006
16ga. (1.30mm)	smooth, clear anodized



Grocery distribution warehouse
using Glance-Guard™ Mark III

THERMOSTOP

Tradition of quality

3775 Losch Blvd.
Longueuil (Quebec)
Canada
J3Y 5T7

Phone: 450.678.8666
Toll free: 866.678.0123
Fax: 450.678.7765
thermostop.com

Warranty

Thermostop doors and
hardware carry a warranty of
one (1) year against any defects
or faulty workmanship. The door
panels carry a ten (10) year
limited warranty against
perforation due to rusting, and
a five (5) year limited warranty
on delamination, under normal
operational conditions.

THERMOSTOP